

@walkerimaging

Terms to Know

Indigenous, Native, American Indian, Tribal: Western umbrella terms for and vague references to thousands of unique nations/individuals with Turtle Island histories dating back to always and currently experiencing oppression stemming from settler colonialism.



See also: *Indian, Native American, First Nations, Aboriginal, skins, NDN*

Racism: A belief that race is the primary determinant of human traits and capacities and that racial differences produce an inherent superiority of a particular race.

(Merriam-Webster)

Womxn: Alternative spelling that rejects patriarchy in language by removing "men" as the root of "womxn."

The term also proactively includes transgender womxn, female-assigned genderqueer/gender non-conforming people, as well as cisgender womxn.

(Colorado Trust)

Patriarchy: A sociopolitical and cultural system that values masculinity over femininity and perpetuates oppressive and limiting gender roles, the gender binary, trans phobia and sexism, sexual assault, the political and economic subordination of womxn, and more.

(Everyday Feminism)

Sexism: (1) Prejudice or discrimination based on sex, especially discrimination against women;

(2) behavior, conditions, or attitudes that foster stereotypes of social roles based on sex

(Merriam-Webster)

Settler Colonialism: An ongoing system of power that perpetuates the genocide and repression of Indigenous peoples and cultures. It normalizes the continuous settler occupation, exploiting lands and resources to which Indigenous peoples have genealogical relationships.

Settler colonialism includes interlocking forms of oppression, including racism, white supremacy, heteropatriarchy, and capitalism. Settler colonizers do not merely exploit Indigenous peoples and lands for labor and economic interests; they displace them through settlements.

(Alicia Cox)



Indigenous, Native, American Indian, Tribal: Western umbrella terms for and vague references to thousands of unique nations/individuals with Turtle Island histories dating back to always and currently experiencing oppression stemming from settler colonialism.



See also: Indian, Native American, First Nations, Aboriginal, skins, NDN

Womxn: Alternative spelling that rejects patriarchy in language by removing "men" as the root of "womxn."

The term also proactively includes transgender womxn, female-assigned genderqueer/gender non-conforming people, as well as cisgender womxn.

(Colorado Trust)

Sexism: (1) Prejudice or discrimination based on sex, especially discrimination against women;

(2) behavior, conditions, or attitudes that foster stereotypes of social roles based on sex

(Merriam-Webster)

Racism: A belief that race is the primary determinant of human traits and capacities and that racial differences produce an inherent superiority of a particular race.

(Merriam-Webster)

Patriarchy: A sociopolitical and cultural system that values masculinity over femininity and perpetuates oppressive and limiting gender roles, the gender binary, trans phobia and sexism, sexual assault, the political and economic subordination of womxn, and more.

(Everyday Feminism)

Settler Colonialism: An ongoing system of power that perpetuates the genocide and repression of Indigenous peoples and cultures. It normalizes the continuous settler occupation, exploiting lands and resources to which Indigenous peoples have genealogical relationships.

Settler colonialism includes interlocking forms of oppression, including racism, white supremacy, heteropatriarchy, and capitalism. Settler colonizers do not merely exploit Indigenous peoples and lands for labor and economic interests; they displace them through settlements.

(Alicia Cox)

binary, trans phobia and sexism, sexual assault, the political and economic subordination of womxn, and more.

(Everyday Feminism)

Settle
oppre
heter
colon
peopl
inter

(Alicia)

PRIVILEGE + PREJUDICE + POWER



**There is no such thing as
a single-issue struggle
because we do not live
single-issue lives.**

Audre Lorde

Historical Trauma



Taino Tortures

Three-fold definition:

1. The dominant culture perpetrates mass trauma on a population in the form of colonialism, slavery, war or genocide.
2. The affected population shows physical and psychological symptoms in response to the trauma.
3. The initial population passes these responses to trauma to subsequent generations, who in turn display similar symptoms.

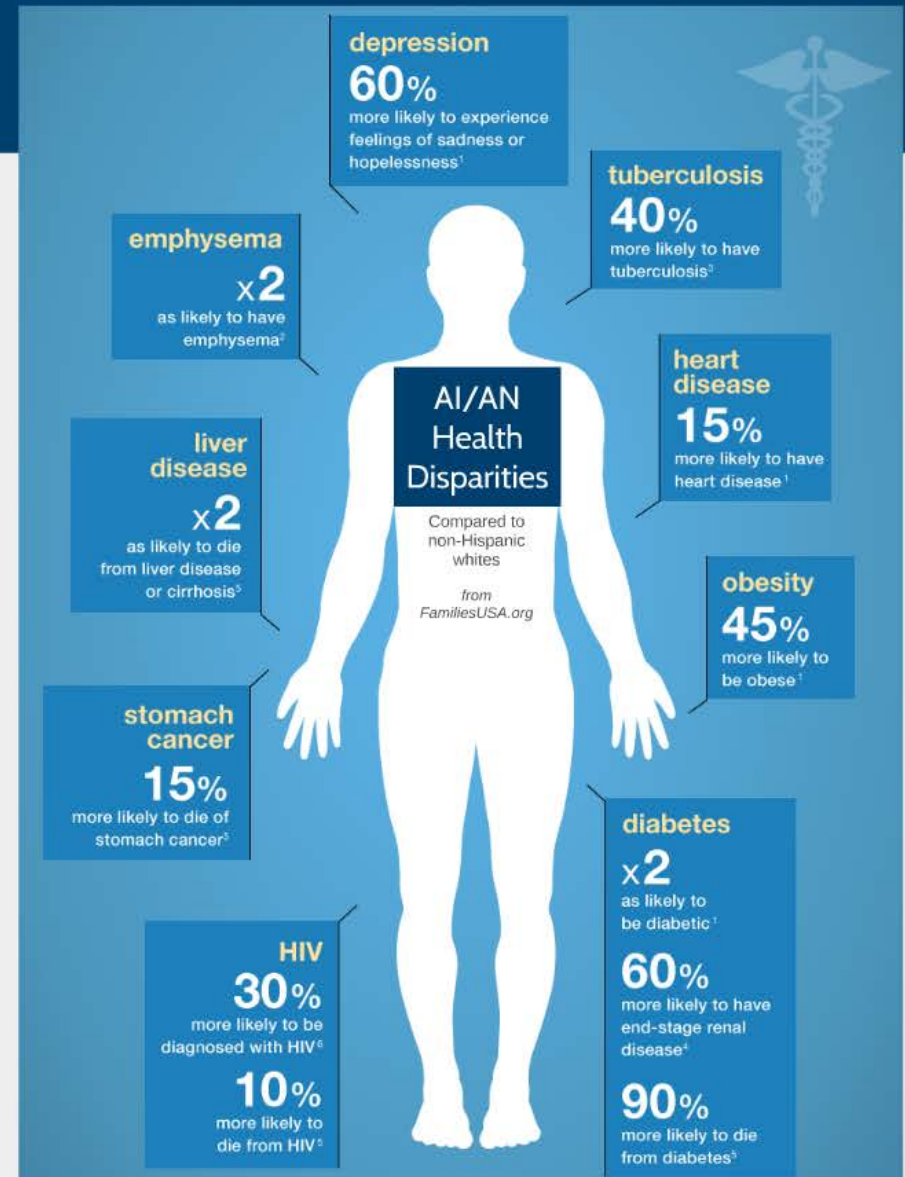
Sotero, M. (2006). A Conceptual Model of Historical Trauma: Implications for Public Health Practice and Research. *Journal of Health Disparities Research and Practice*, 1(1), 93–108

Historical Trauma

High rates of addiction, suicide, mental illness, sexual violence and other ills among Native peoples might be influenced by historical trauma.

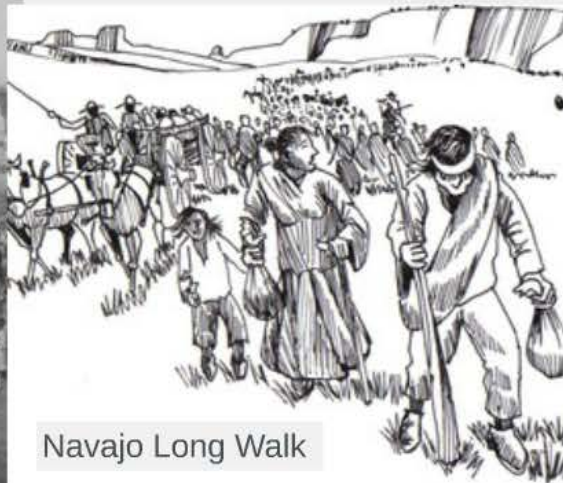
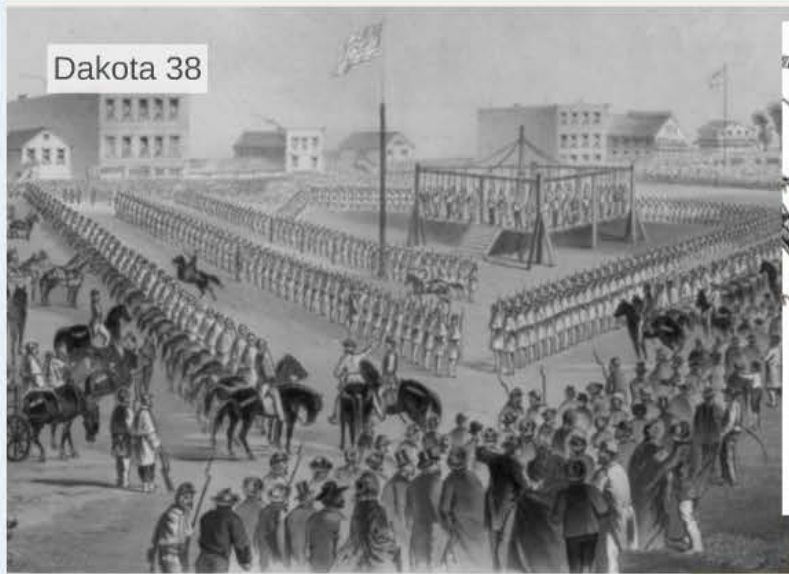
“Many present-day health disparities can be traced back through epigenetics to a ‘colonial health deficit,’ the result of colonization and its aftermath.”

Bonnie Duran (Opelousas/Coushatta), associate professor in the Department of Health Services at the University of Washington School of Public Health and Director for Indigenous Health Research at the Indigenous Wellness Research Institute.



Historical Trauma

Dakota 38

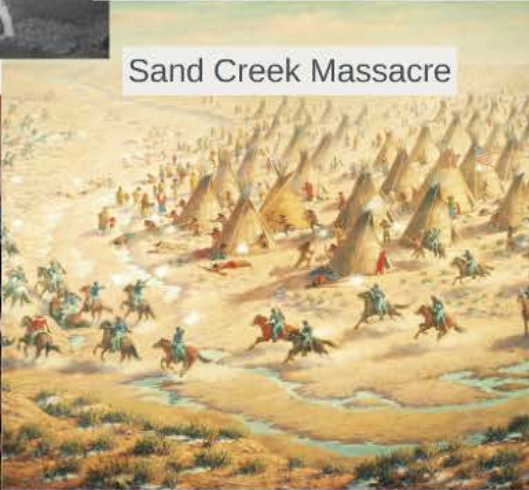


Navajo Long Walk



Wounded Knee

Sand Creek Massacre



Cherokee Trail of Tears



Boarding Schools



Violence Against Native Womxn



Photo by Taté Walker

- Native womxn are murdered at 10 times the national average.
- One out of every three Native womxn will be raped in her lifetime.
- Physical assaults, stalking, and harassment are more than twice as likely if you're a Native womxn.
- 39% of Native womxn experience intimate partner violence in their lifetime, higher than any other race or ethnicity.
- 80% of perpetrators are non-Native.

From the Indian Law Resource Center, CDC, Bureau of Justice Statistics (US Department of Justice)

Violence Against Native Womxn

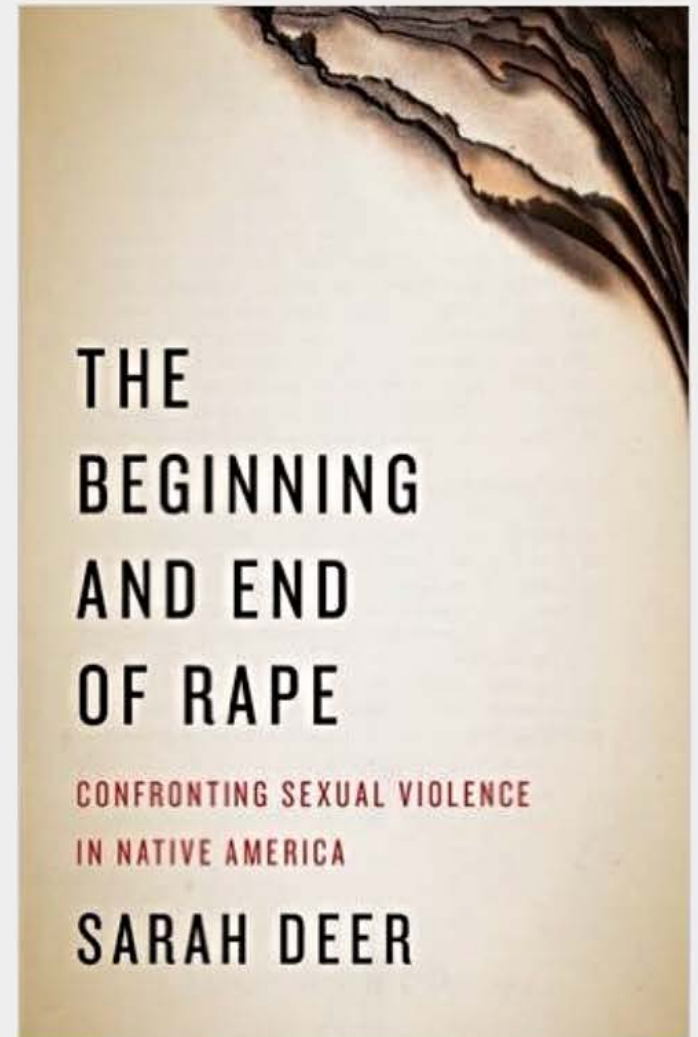
The connotations of the word allow society to absolve itself of blame. The word suggests that the problem is biological, that the problem originated independent of long-standing oppression, that it has infected our society, twisting human relations. A biological epidemic is not a crisis of human origin; it is the result of the unchecked spread of microscopic viruses and bacteria. ...

Using the word epidemic deflects responsibility because it fails to acknowledge the agency of perpetrators and those who allow the problem to continue. ...

Using the word epidemic to talk about violence in Indian country is to depoliticize rape. It is a fundamental misstatement of the problem. If this book does nothing else, I hope to demonstrate why rape in the lives of Native women is not an epidemic of recent, mysterious origin. Instead, rape is a fundamental result of colonialism, a history of violence reaching back centuries.

**An epidemic is a contagious disease;
rape is a crime against humanity.**

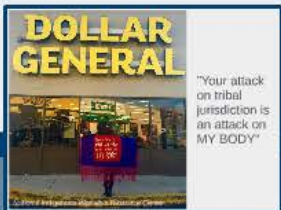
“ ”



VAWA



vice.com



The 2013 Violence Against Women Act affirmed tribes' ability to exercise special domestic violence criminal jurisdiction over non-Natives who commit domestic assault, or engage in dating violence, on tribal lands.

- Tribal police and prosecutors cannot charge a non-Indian with child abuse, abuse of elders or senior citizens, or destruction of property.
- They are also unable to charge a perpetrator or abuser who is violent towards responding officers.
- Domestic violence cases are very complicated and often involve more than just an abuser and his victim—they can involve the parents of the victims, neighbors, cousins, pets—anyone who happens to be in the home at the time of the assault.
- Implementing VAWA to 573+ unique tribes is time-consuming and expensive.

- National Indigenous Women's Resource Center

Violence is a many-headed beast.



Education/Academic

State/Police

Social Services

Political

Healthcare

Environmental

Media

Relational

Historical

Educational (Academic) Violence



State/Police Violence

Native American men are incarcerated at 4x the rate of white men.

Native American womxn are incarcerated at 6x the rate of white womxn.

Lakota People's Law Project

Social Services Violence

Indian
children
make up
13.5%
of the
total child
population
of South
Dakota,

but make up
at least
54%
of the
foster care
population



Political Violence

**Voting in ND?
Have a valid ID?**

- Driver's license
- Non-driver's ID card
- Tribal ID card
- Student ID Certificate
- Long-term Care Certificate

Must include name
ND residential address
Date of birth

**VOTING IN
NORTH
DAKOTA**
easy as pie!



TRIBAL ID CARD
Name: J. J. J. J.
Address: 12345 Main St, Bismarck, ND 58101
Date of Birth: 01/01/1980
Sex: F
Race: N
Photo: [Small photo of the cardholder]

Everything you need to know about voting in North Dakota is at:
vote.nd.gov or call 800-352-0867, Option 6

Voice Your VOTE
SOUTH DAKOTA VOICES COUNT
Secretariat of State Elections Services



Donald J. Trump

@realDonaldTrump

Following

Pocahontas (the bad version), sometimes referred to as Elizabeth Warren, is getting slammed. She took a bogus DNA test and it showed that she may be 1/1024, far less than the average American. Now Cherokee Nation denies her, "DNA test is useless." Even they don't want her. Phony!

8:06 AM - 16 Oct 2018



Violence Related to Health & Wellness



Comatose **woman** who **gave birth** is Arizona tribe member

ABC News - 6 hours ago

Police served a search warrant Tuesday to get DNA from all male employees at a long-term care facility in Phoenix where a patient who had ...

Facility CEO resigns after **woman** in vegetative state **gives birth**; new ...

CBS News - 21 hours ago

Police obtain male workers' DNA samples at facility where vegetative ...

whnt.com - 6 hours ago

After **Woman** in Long-Term Vegetative State at Ariz. Nursing Facility ...

PEOPLE.com - 17 hours ago

Arizona care facility CEO resigns after **woman** in vegetative state for ...

The Hill (blog) - 17 hours ago

[View all](#)



Woman in vegetative state for 10 years, apparently assaulted, **gives** ...

ABC News - Jan 4, 2019

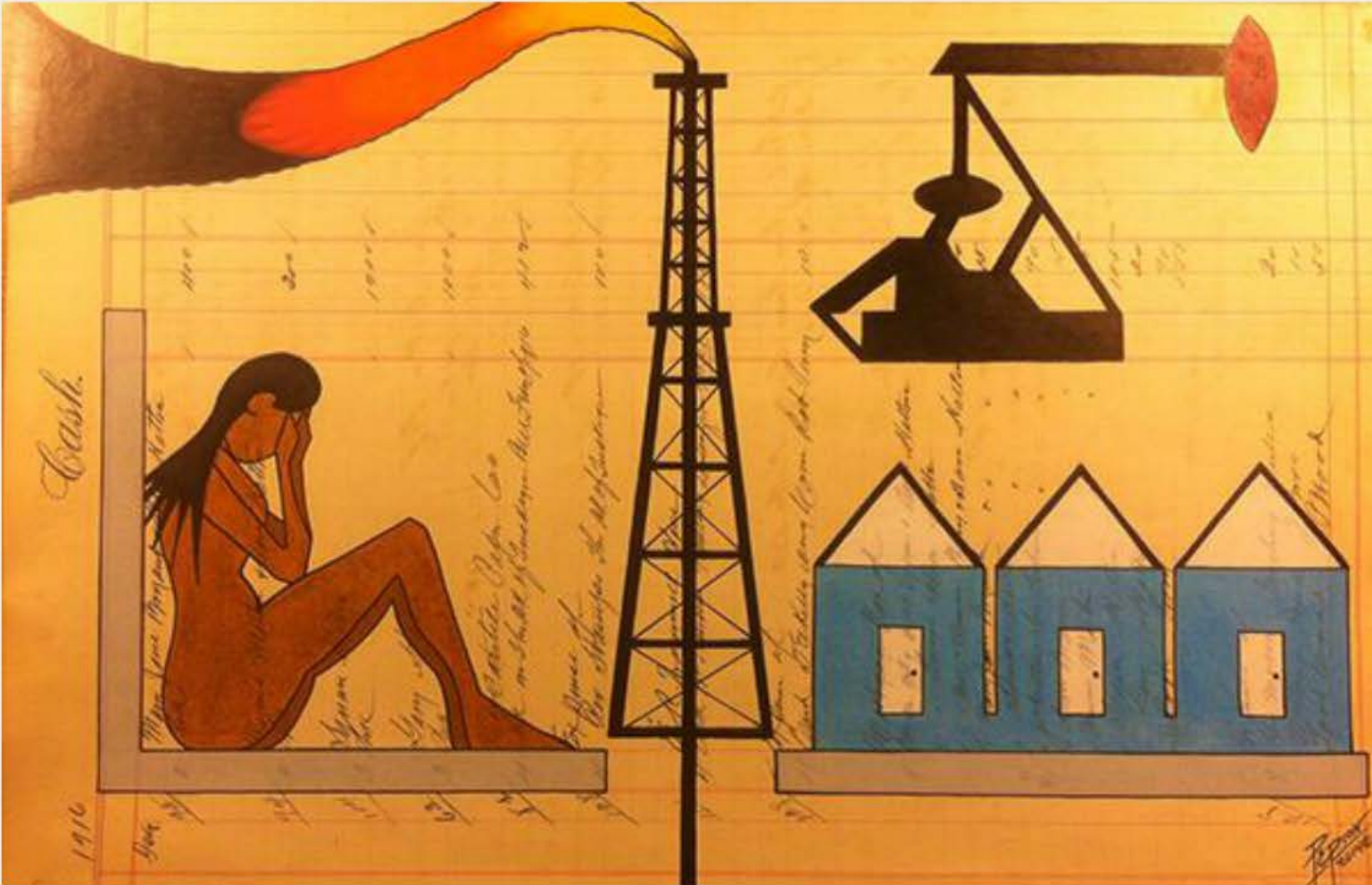
The **woman**, according to the sources cited by KPHO, **gave birth** to a healthy baby boy on Dec. 29 last year. "None of the staff were aware that ...

Sex abuse investigation is launched after a **woman** who has been in a ...

Daily Mail - Jan 4, 2019

[View all](#)

Environmental Violence



"Girl Lost in Man Camp," by
John Isaiiah Pepion (Blackfeet)
johnisaiahpepion.com

Media Violence



RED SOX OUTLAST ASTROS, 7-5, IN GAME 2 OF ALCS, TIE SERIES: D1



PATRIOTS EDGE CHIEFS, 43-40, ON LAST-SECOND FIELD GOAL: C1

The Boston Globe

MONDAY, OCTOBER 15, 2018

Warren reveals test confirming ancestry

DNA analysis provides evidence of Native American heritage for senator who has faced Trump's ridicule

By Annie Linskey
GLOBE STAFF

WASHINGTON — Senator Elizabeth Warren has released a DNA test that provides “strong evidence” she had a Native American in her family tree dating back 6 to 10 genera-

tions, an unprecedented move by one of the top possible contenders for the 2020 Democratic nomination for president.

Warren, whose claims to Native American blood have been mocked by President Trump and other Republicans, provided the test re-

sults to the Globe on Sunday in an effort to defuse questions about her ancestry that have persisted for years. She planned an elaborate rollout Monday of the results as she aimed for widespread attention.

The analysis of Warren's DNA was done by Carlos D. Bustamante, a Stanford University professor and expert in the field who won a 2010 MacArthur fellowship, also known as a genius grant, for his work on tracking popula-

tion migration via DNA analysis.

He concluded that “the vast majority” of Warren's ancestry is European, but he added that “the results strongly support the existence of an unadmixed Native American ancestor.”

Bustamante calculated that Warren's pure Native American ancestor appears in her family tree “in the range of 6-10 generations ago.” That timing fits Warren's family lore, passed down during her Okla-

WARREN, Page A9

GLADIATOR AARON HERNANDEZ AND FOOTBALL INC. | DAY 2 OF 6



State's stalled Airbnb plan leaves local rules in limbo

Relational Violence



Knik Chief Nikaly and family near Anchorage, Alaska.

Photographed by H. G. Kaiser, ca. 1910.

Prevent violence; empower Native womxn!

Eighth Generation

#StopETP

#wetsuwetenstrong

#MMIW

#NotYourMascot

Believe Victims & Survivors

ATribeCalledGeek.com

Indigenous Peoples Day

OXDX

Beyond Buckskin Boutique

NativeAppropriations.com

Indian Country Today

DIVEST!

AmericanIndiansInChildrensLiterature.blogspot.com

Connect with me!

Taté Walker (Mniconjou Lakota)

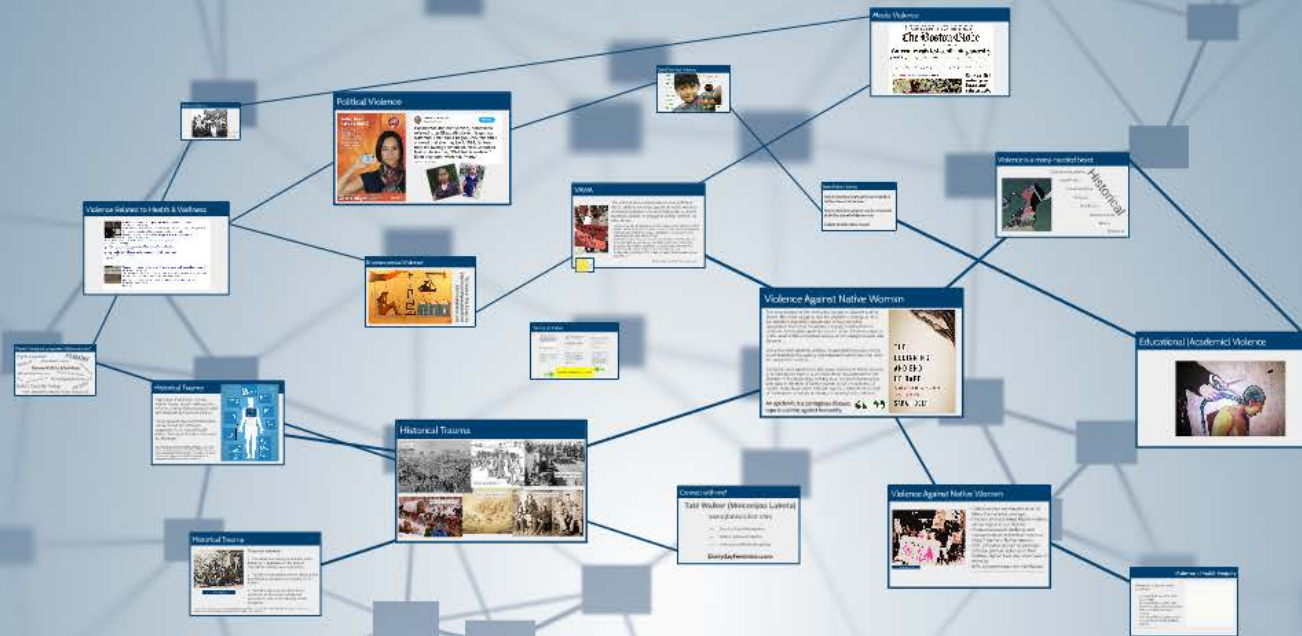
www.jtatewalker.com

>> [Facebook.com/jtatewalker](https://www.facebook.com/jtatewalker)

>> [Twitter @MissusTWalker](https://twitter.com/MissusTWalker)

>> [Instagram @WalkerImagining](https://www.instagram.com/WalkerImagining)

EverydayFeminism.com



Violence Against Indigenous Womxn

Sexism, Settler Colonialism, & the Struggle for Health Equity

By Taté Walker (Mniconjou Lakota) | They/Them/Mother



www.jtatewalker.com



[@missustwalker](https://twitter.com/missustwalker)



[@jtatewalker](https://www.facebook.com/jtatewalker)



[@walkerimagining](https://www.instagram.com/walkerimagining)