



*A Health Equity Foundation*

# Health Equity Learning Series

*Telling the Health Equity Story*

*Dedicated to Achieving Health Equity for All Coloradans*

# HEALTH EQUITY LEARNING SERIES

---

- Aurora
- Boulder
- Colorado Springs
- Craig
- Denver
- Durango
- Eagle
- Fort Collins
- Glenwood Springs
- Granby
- Grand Junction
- Gunnison
- Lamar
- Pueblo
- Salida
- Steamboat Springs
- Telluride
- Trinidad

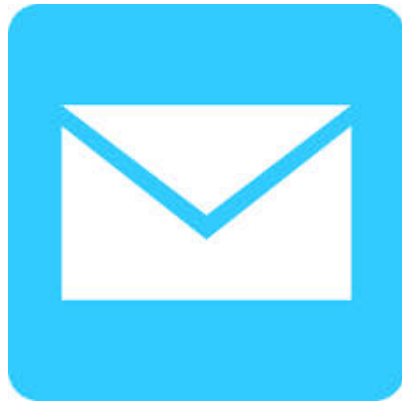
# HEALTH EQUITY LEARNING SERIES

---



## Twitter

- @ColoradoTrust
- #healthequityTCT



## Email

- [healthequity@coloradotrust.org](mailto:healthequity@coloradotrust.org)

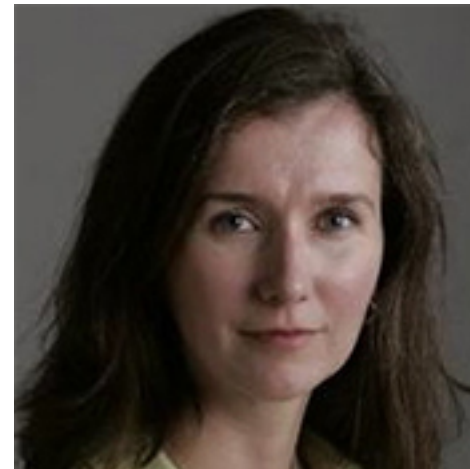
# HEALTH EQUITY LEARNING SERIES

---



**Llewellyn Smith**

Director of Media for Production  
BlueSpark Collaborative



**Laura Frank**

President and General Manager of News  
Rocky Mountain PBS





Important Stories Can Make a  
Difference



Laws change



Behaviors change



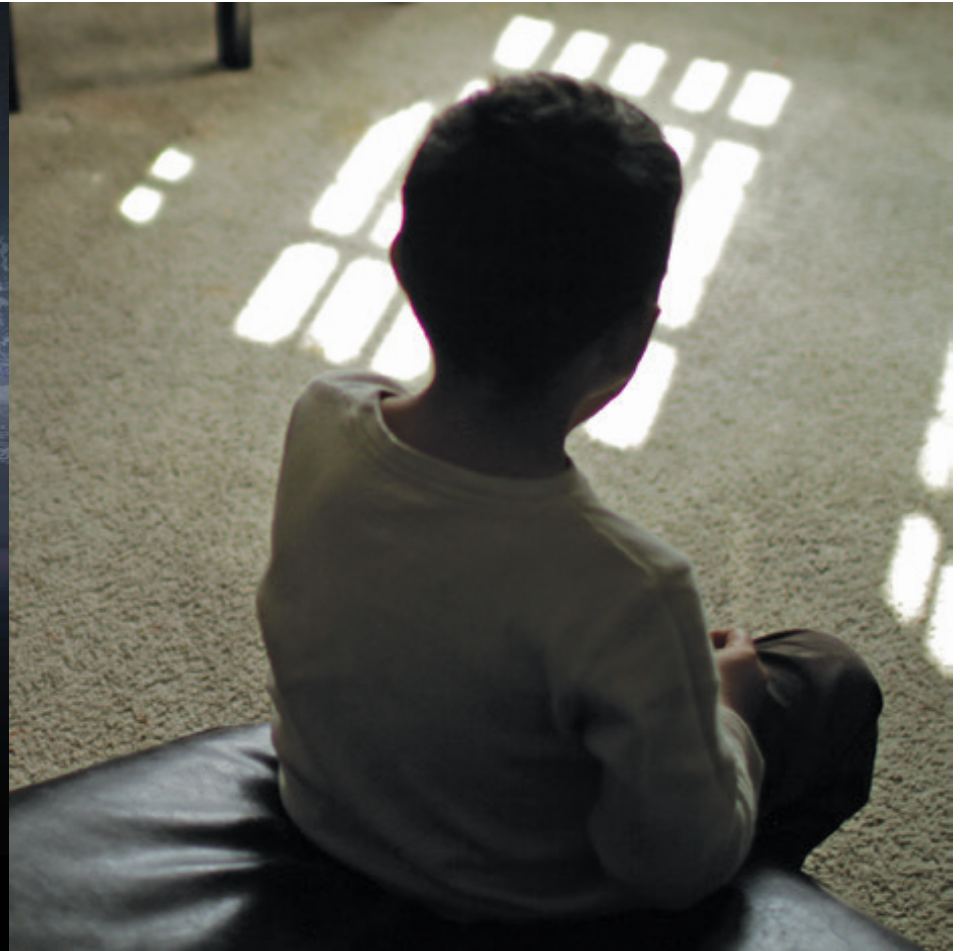
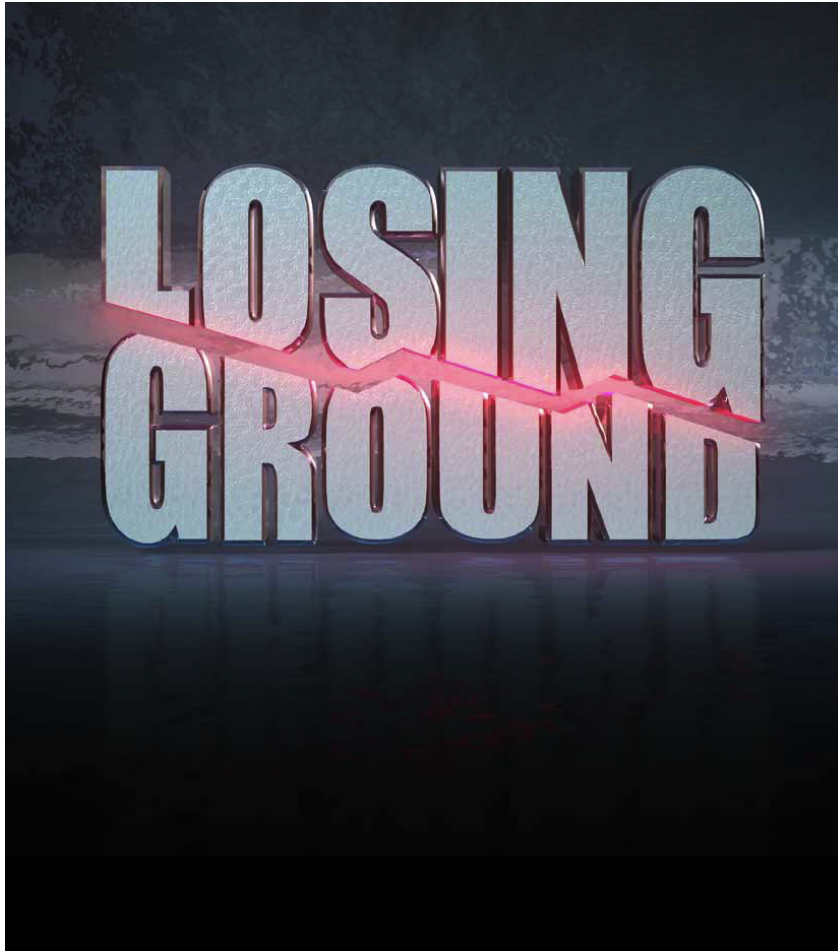
People benefit







Important stories can inspire change

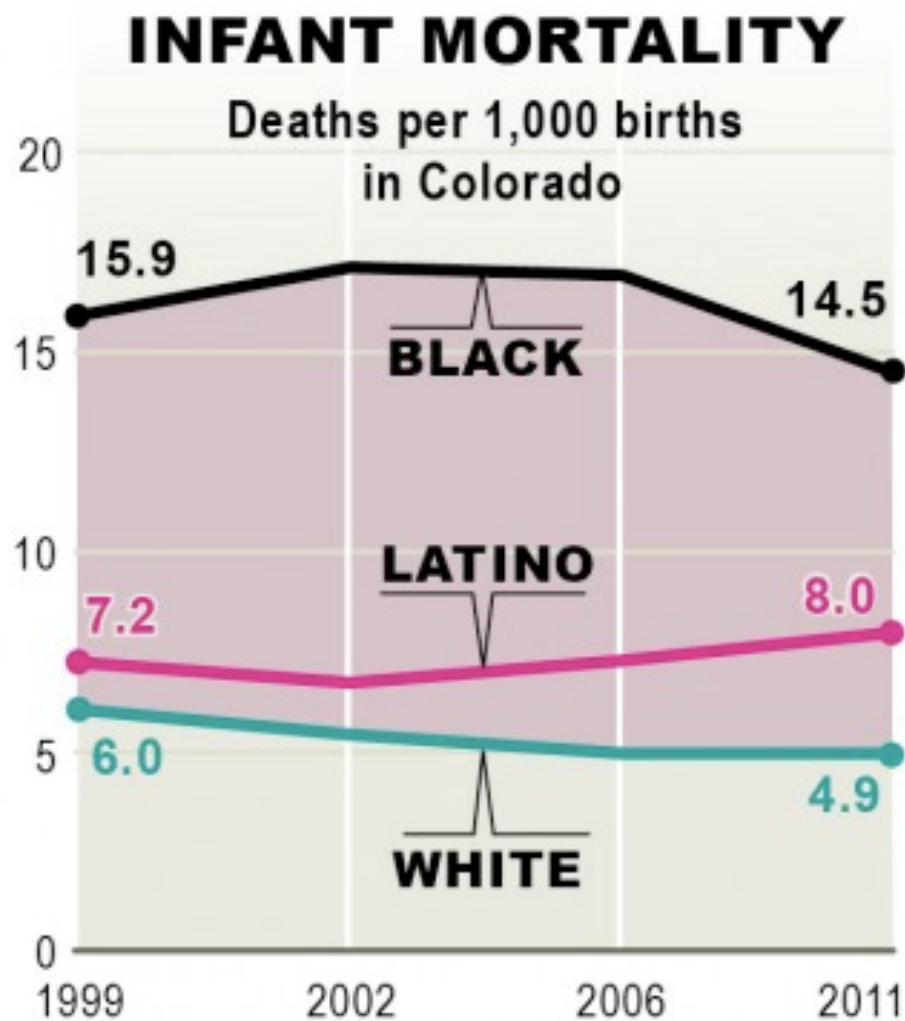




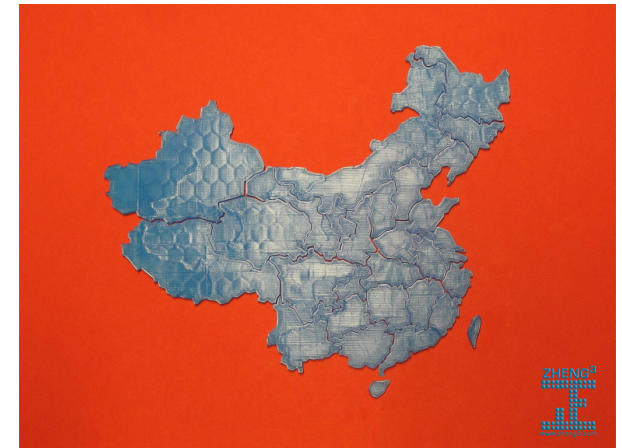


Latino babies = 63% more likely to die  
African American babies = 200% more  
likely to die





\* Each year is an average of the preceding five years.  
Sources: Colorado Department of Public Health and Environment, and I-News research











**I-NEWS**  
**LOSING GROUND**

## ACTION OPPORTUNITIES

Now that you know about the growing disparity between whites and minorities in Colorado, what will you do with that information? Let us know at [www.facebook.com/I-NewsNetwork](http://www.facebook.com/I-NewsNetwork). Here are just some of the possibilities you might consider:

**Lead** a discussion at your home, place of worship, school, book club, service club or other organization.

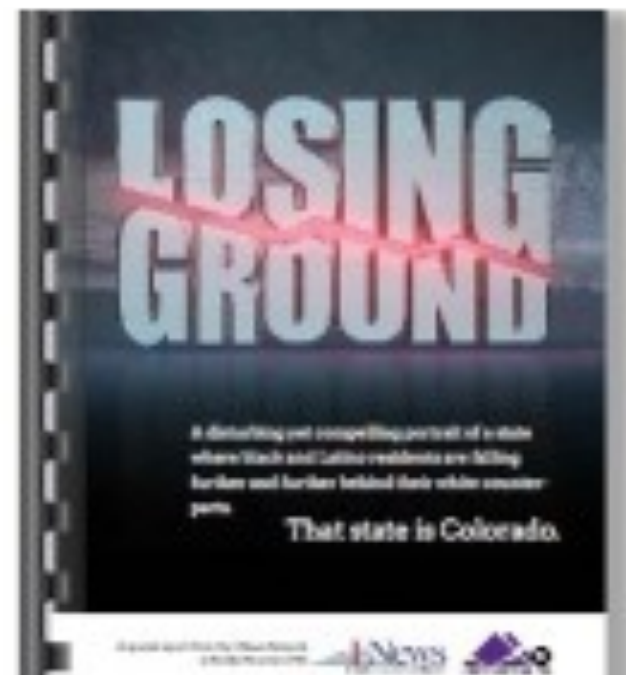
**Host** a community forum at your public library, community center or other public gathering space.

**Start** a conversation on social media, such as Twitter or Facebook.

**Connect** with an organization that addresses issues raised in *Losing Ground*.

- Poverty**
  - Your local community foundation: <http://bit.ly/COCCommunityFoundations>
  - Religious organizations, such as Catholic Charities: <http://www.ccdenvr.org/> or Thrivent Financial for Lutherans: <https://www.thrivent.com/>
- Education**
  - Colorado Legacy Foundation: <http://colegacy.org/>
  - Latin American Educational Foundation: <http://www.laef.org/>
  - Minority Enterprise & Education Development: <http://www.meedcolorado.org/>
- Health**
  - Clinica Family Health Services: <http://www.clinica.org/index.php> • Center for African American Health: <http://www.caahealth.org/page.cfm> • Colorado Health Foundation: <http://www.coloradohealth.org/>
- Incarceration**
  - Open Door Youth Gang Alternatives: <http://opendooryouth.org/> • Criminal Justice Reform Coalition: <http://www.cjrc.org/index.shtml>
- Race relations**
  - Barbershop Talk: <http://barbershoptalk.org/>
  - Aurora NAACP: <http://www.auroracoloradonacp.org/index.html>
  - Latino Community Foundation of Colorado: <http://www.rcfdenver.org/latino/cf/>
- Family**
  - Big Brothers Big Sisters of Colorado: <http://www.biglittlecolorado.org/> • Florence Crittenton Services of Colorado: <http://www.flocritco.org/>
  - McDonnell Family Foundation: <http://www.mcdonnellfoundation.org/>
- Economic development**
  - Your local Chamber of Commerce: <http://bit.ly/COCChambers>
  - Colorado Black Chamber of Commerce: <http://coloradoblackchamber.org/>
  - Hispanic Chamber of Commerce of Metro Denver: <http://hispanicchamberdenver.org/>

1089 Bannock St. Denver, CO 80204 303-620-5672 [I-NewsNetwork.org/LosingGround](http://I-NewsNetwork.org/LosingGround)



**I-News**  
**LOSING GROUND**

**How the state's minorities are faring on important measures of social progress.**

### DISPLAY

**POVERTY GAPS**  
all residents

**COLLEGE GAPS**

**HIGH SCHOOL GAPS**

**HOME OWNERSHIP GAPS**

**MEDIAN FAMILY INCOME**

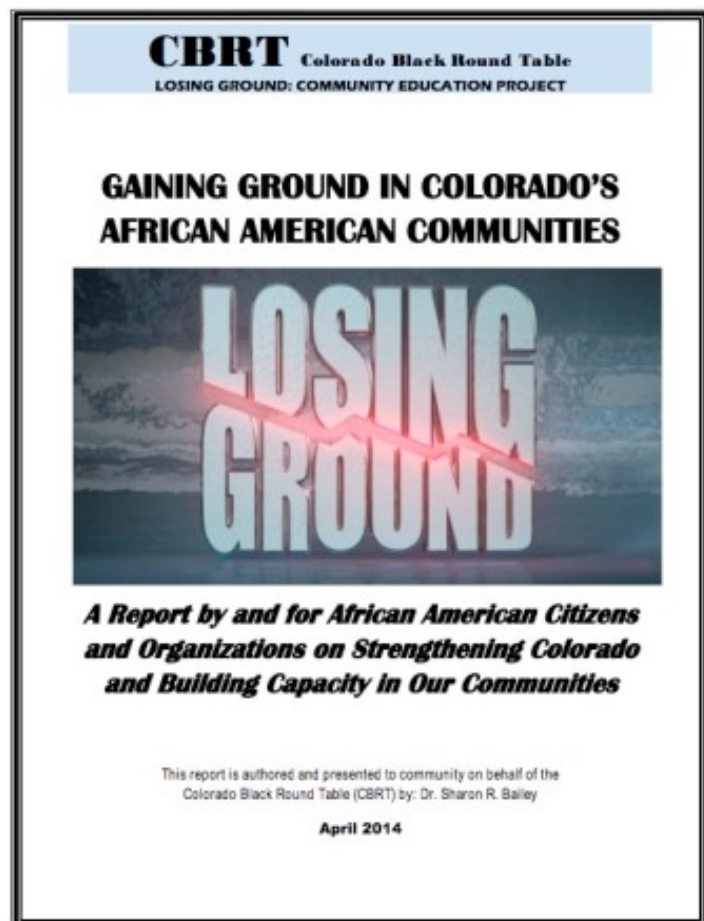
When it comes to some of the most important measures of social progress, recent decades have not been kind to aspirations of equality by Colorado's minority residents. The I-News Network analysis of six decades of U.S. Census data show the state's black and latino residents losing ground to white residents when measured by poverty rates, family income, high school and college graduation rates and home ownership. Health data and justice figures examined also showed disparities.



# LOSING GROUND

THE CLIFF EFFECT







1. Compelling
2. Ubiquity
3. Engagement
4. Follow-up
5. Partnerships



Important Stories Can Make a Difference

Laura Frank  
LauraFrank@rmpbs.org

# HEALTH EQUITY LEARNING SERIES

---

## Join the discussion...

- In-person
- Twitter using #healthequityTCT
- Email [healthequity@coloradotrust.org](mailto:healthequity@coloradotrust.org)

# HEALTH EQUITY LEARNING SERIES

---

**Thank you for joining us!**